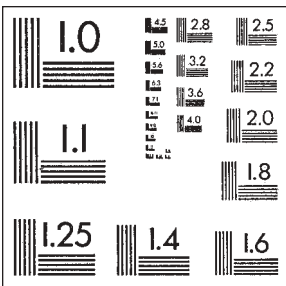
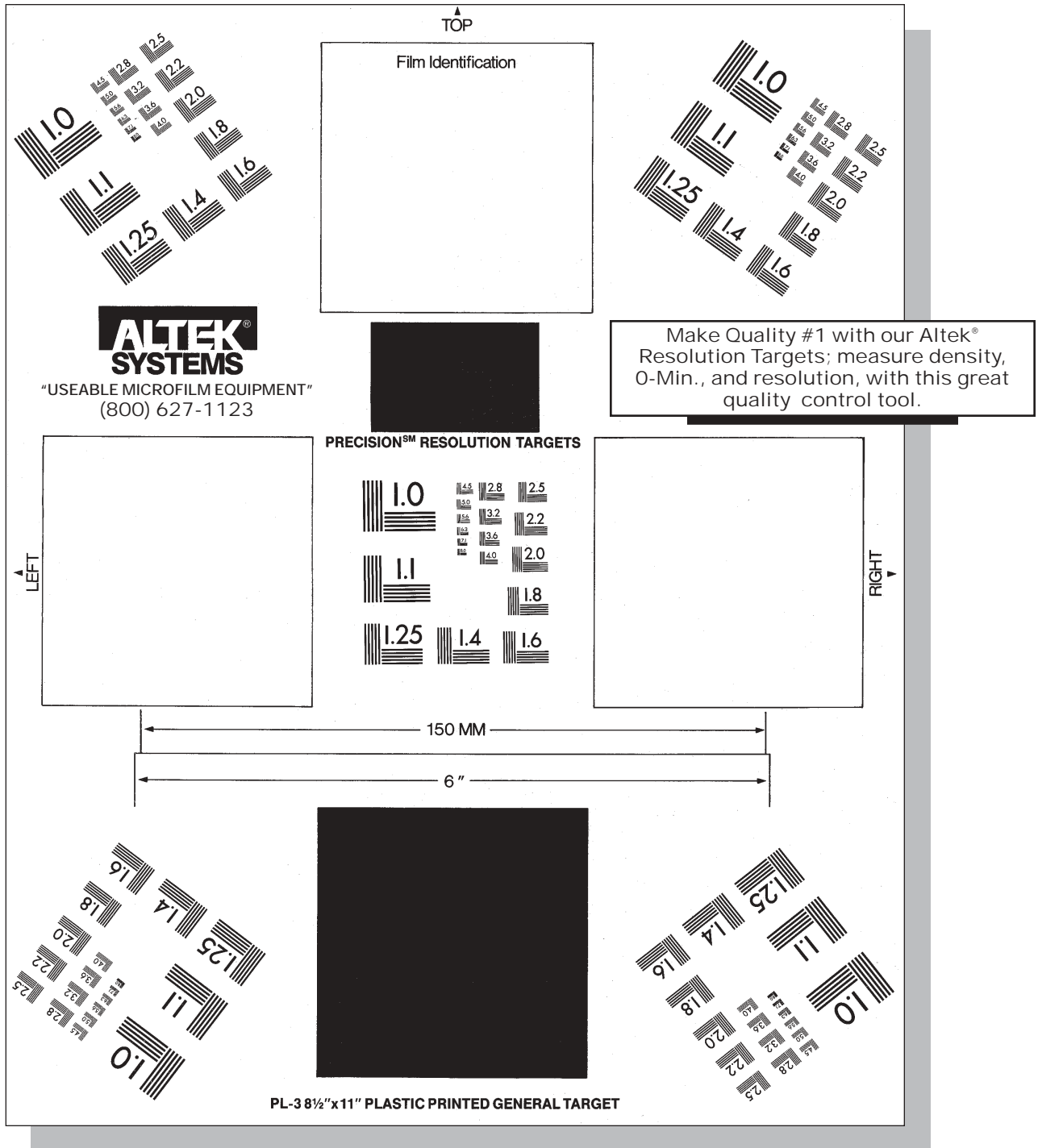


QUALITY / INSPECTION

Altek Resolution Targets



Resolution Test Targets – used for evaluating the output image of your microfilm camera. Each target is produced on a durable, tear resistant film base. We offer targets for both rotary and planetary cameras. Microcopy test targets are also available for large document cameras. The MT-1 and MT-2 targets meet AIIM and ANSI standards. Call for more information.

- Rotary Test Target – MT-1 – 9" x 14" – Stock No. 1436
- Planetary Test Target – MT-2 – 11" x 14" – Stock No. 1437
- Microcopy Test Target – MT-5 – 1.8" x 1.8"-5 – Stock No. 1438

CALL FOR MORE INFORMATION